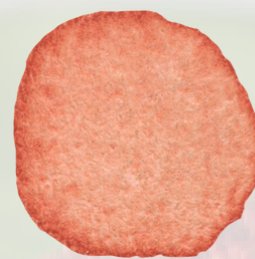




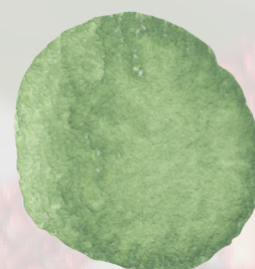
PLANT DESIGNS

SEASONAL



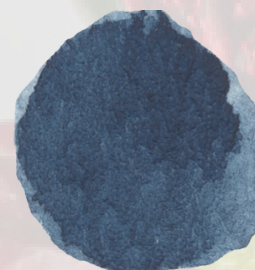
Celebrate All Year

Mark occasions all year round. Book for the whole year, and your displays will be delivered on rotation.



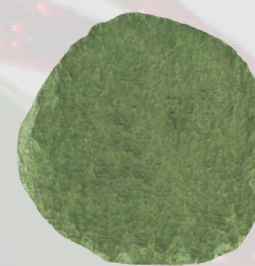
On budget

An economical alternative to floristry, displays last for a month instead of a week, looking great while saving on your budget.



Enliven your space

The entire display is changed with each rotation, adding a burst of colour and interest with each season.



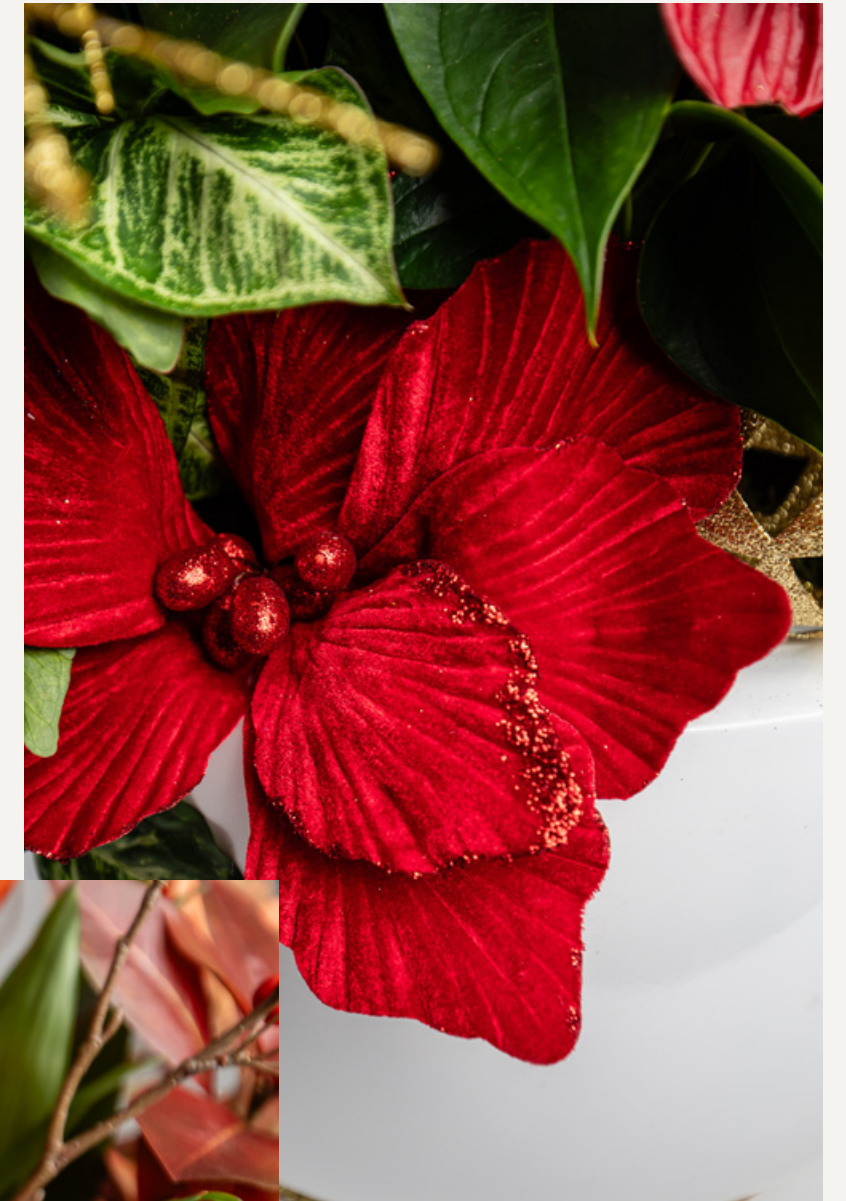
Living plants

Rather than cut flowers, these plants are living things, improving air quality and wellbeing in your space.



YEAR ROUND

We can offer a range of displays to mark occasions through the year. From Spring to Winter, you can celebrate with a fresh living display, expertly made by our plant designers.





VALENTINES



SPRING



SUMMER



AUTUMN



HALLOWEEN

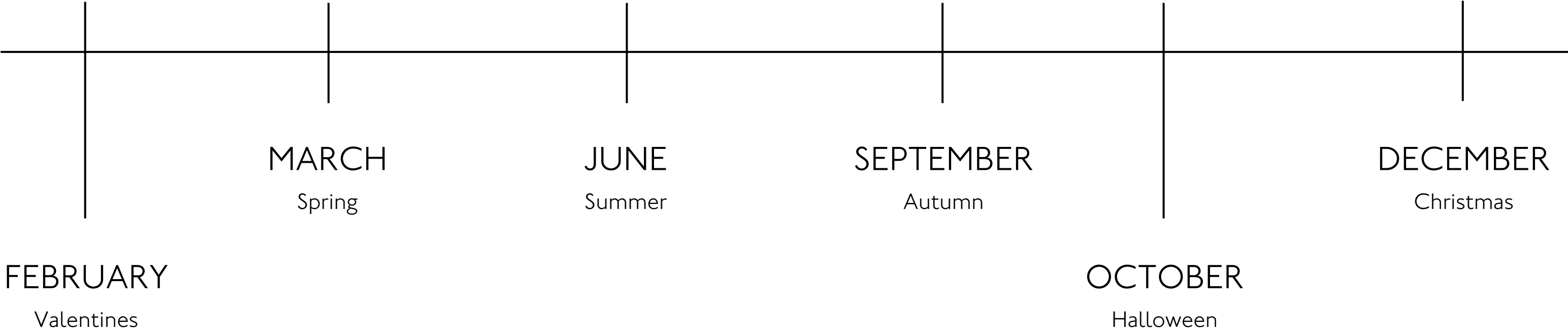


CHRISTMAS

SELECT YOUR SEASONS

You can pick from four or six displays a year. Four displays includes spring, summer, autumn and Christmas. Six rotations has the addition of Valentine's and Halloween.

CHOOSE YOUR ROTATION





SELECT YOUR SIZE

All Bloom displays come in three sizes. They all incorporate beautiful design details and fresh blooms, at different scales to best fit your space.



SCALE UP

We can offer larger scale displays that take key seasons to a whole new level.

Make the reception desk a real focal point for guests and colleagues alike.



GO LARGE

Want to get people involved? We can also build larger scale interactive displays, to encourage people to stop, sit or take photos, feeling part of the celebration.

HANDMADE, HAND DELIVERED

Bloom displays are handmade by our talented team of plant designers. They are then wrapped and delivered with care to your building by our friendly installations crew and cared for onsite by trained horticulturalists.



ECO-FRIENDLY

We are committed to reducing our impact on the planet in whatever way we can. Bloom displays are a great alternative to cut flowers which are often airfreighted and last for mere days. Our displays are made of living plants and last for a whole month. The plants are then re-homed or composted after they leave your site.

RANGE OF SERVICES

Plants may be our bread and butter, but we also offer a huge range of other services, so you can be guaranteed to find something that works for you. From preserved planting and short-term event designs through to stunning Christmas decor and even hands-on plant workshops, we've got it all.



63 Farringdon Road
London EC1M 3JB
020 3837 0509
www.plantdesigns.co.uk
info@plantdesigns.co.uk

SOCIAL

@plantdesignsldn

